

4E SERIES



DEUTZ-FAHR
4070E - 4080E



SOME OPTIONS AND/OR SPECIFICATIONS SHOWN MAY NOT BE AVAILABLE IN ALL MARKETS



THE NEW **4E** SERIES.
COMPACT DESIGN MEETS
GREAT INNOVATION.



4E SERIES	4070E	4080E
Power (HP/kW)	Gross 70 / 52 Rated 65 / 48	Gross 80 / 59.6 Rated 75 / 55.4
Rear hitch lift capacity (lb/kg)	5,500 / 2,500	5,500 / 2,500
Wheelbase (in/mm)	82.7 / 2,100	82.7 / 2,100
Base weight (lb/kg)	6,600 / 3,000	6,600 / 3,000

Utility, light field work or around-the-farm chores – the new 4E Series is well suited for multiple uses on the farm. There are two models to choose from, ranging from 70 gross hp (52 kW) to 80 gross hp (59.6 kW). The robust, one-piece hood, with its modern design made from high-quality steel, makes it clear at first glance that this utility tractor is offering innovative technology in a durable frame. The new 3-cylinder FARMotion engines are extremely powerful, reliable and economical. Two transmission options are available - both featuring a synchornized shuttle for ease of use. DEUTZ-FAHR has developed the front axles specifically for this utility class - 55 steering angle, differential locks and four-wheel drive with mechanical or elec-

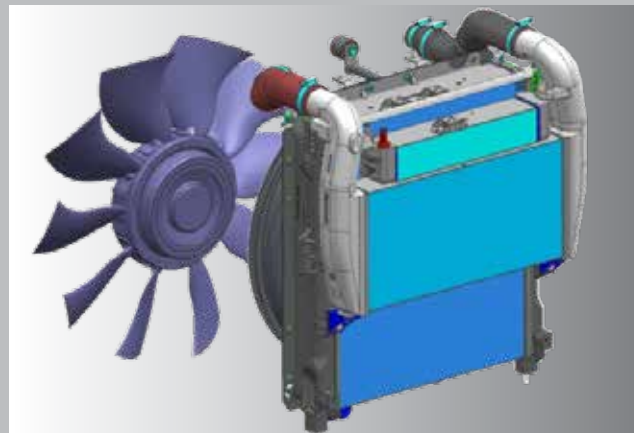
tro-hydraulic activation, and four-wheel brakes. The attachment points offer outstanding versatility. Features include a rear hitch lifting capacity of up to 5,500 lb, hydraulic pumps for 11.1 gpm or 13.2 gpm flow, two rear remote valves and 540 RPM PTO. The driver's platform meets the highest standard of comfort. The controls have been laid out for easy identification and operation. The new dashboard provides clear information about the operating conditions. Both the steering wheel and driver's seat are adjustable. With the new 4E Series, DEUTZ-FAHR is proving once again just how comfortable and versatile a utility tractor can be.



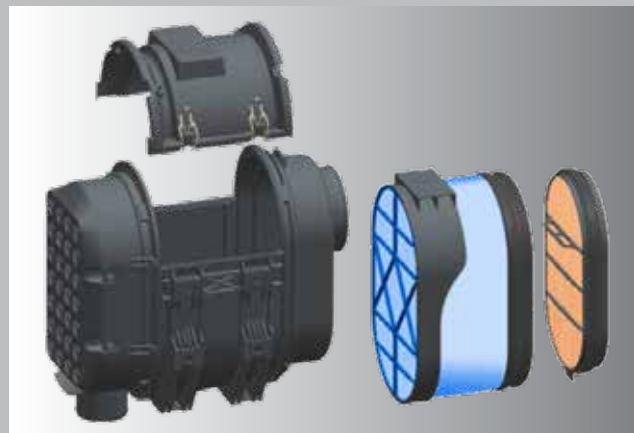
FARMOTION ENGINE.
COMPACT DESIGN MEETS
GREAT POWER



Electronic engine speed control improves comfort during long working days.



Cooling system with enlarged heat exchange surface area and viscous fan.



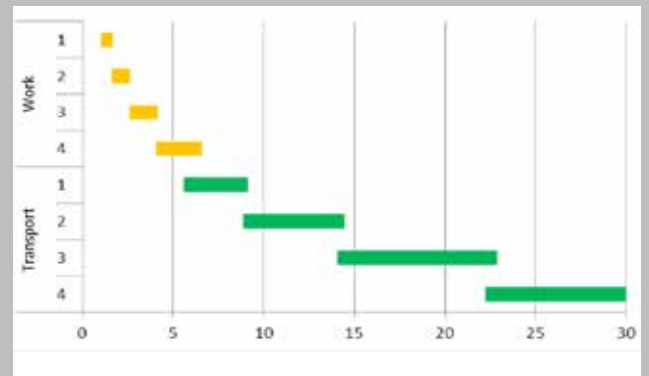
Low-maintenance, 2-stage PowerCore air filter with dust ejector.

Hard at work under the newly designed hood is the high performance FARMotion three-cylinder diesel engine. Specifically developed for agricultural applications, these compact, powerful engines feature turbocharging and high pressure common rail direct fuel injection, along electronic engine management, to supply maximum power and sustained torque even at low engine speeds. Using only exhaust gas recirculation (EGR) and a diesel oxidation catalyst (DOC), these engines meet EPA Tier 4 emissions requirements without requiring a diesel particulate filter (DPF) or diesel exhaust fluid

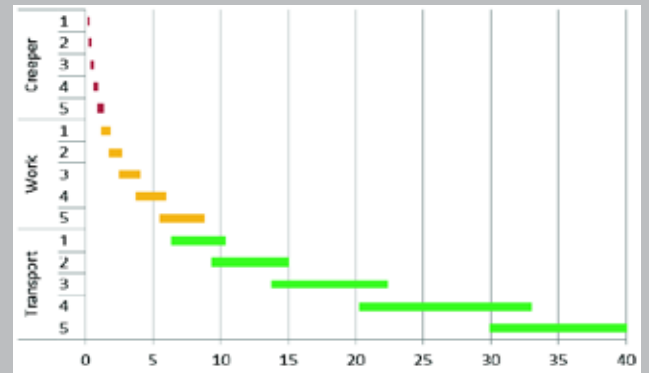
(DEF). FARMotion engines are very efficient with extremely low fuel consumption and minimal noise levels. Other new features include a compact cooling system with an enlarged cooling surface, intercooler, a fuel cooling system, optimized air flow with viscous fan, and the two-stage PowerCore air filter with dust ejector. Both systems support engine efficiency and are designed for long maintenance intervals as well as fast and straightforward servicing. With FARMotion engines, DEUTZ-FAHR is proving once again just how powerful and efficient a utility model can be.



TRANSMISSION EQUIPMENT.
COMPACT DESIGN MEETS
GREAT PRECISION.



Simple 8x8 transmission with evenly spaced gears and ranges.



15x15 transmission offers more working speeds and a creeper range for specialized applications and greater versatility.



Up to 25 mph transport speed with 15x15 transmission option.

The right transmission for a specific operation and the right speed for a specific job – you can meet these challenges with the new 4E Series. Highly efficient with maximum precision - the choice is yours. There are two mechanical transmission variants available: a simple 8x8 transmission with 4 synchronized gears, 2 ranges and forward/reverse shuttle, or a versatile 15x15 transmission with 5 synchronized gears, 25 mph

transport capability, and 3 ranges including a creeper. The convenient shuttle lever allows for easy, effortless shifting from forward to reverse while on the roll without gear grinding. A creeper provides low ground speed at high engine RPM for specialized jobs. DEUTZ-FAHR is proving once again just how precise and efficient a utility model can be.



EASY-SHIFT TRANSMISSION.
BECAUSE GEAR-CHANGING IS
PRECISION WORK.



The compact chassis and smart axle design allow for a steering angle of up to 55 degrees.



Option of mechanical or electro-hydraulic activation of the 4wd and differential lock.



4-wheel braking with wet disc brakes.



Mechanical automotive-style parking brake near the operator for easy reach.

The right transmission for any operation and the right speed for any job – you can meet these challenges with the new 4E Series. Highly efficient with maximum precision – the choice is yours. There are two mechanical transmission variants available: a simple 8x8 synchro shuttle transmission with 4 synchronized gears and 2 ranges, or a 15x15 synchron shuttle transmission with 5 synchronized gears, 25 mph transport speed, and 3 ranges including creeper. The convenient shuttle lever offers smooth, effortless, in-line shifting from forward to reverse on the roll without gear grinding. A creeper range provides low ground speed at high engine RPM for specialized applications. With the new 4E Series, DEUTZ-FAHR is proving once again just how precise and efficient a utility model can be.



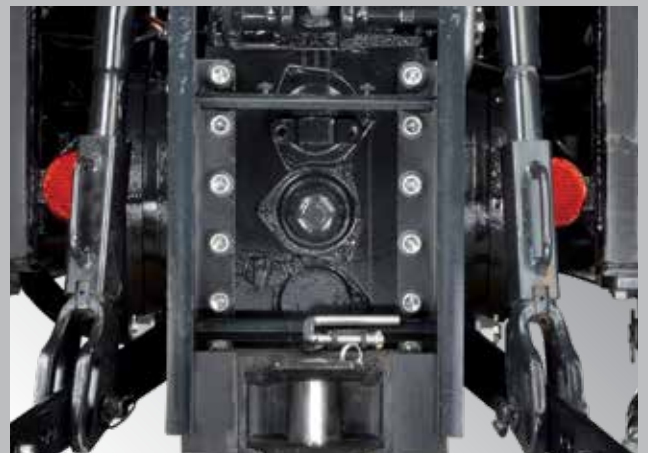
HYDRAULIC AND REAR LINKAGE
WORK. COMPACT DESIGN MEETS
GREAT VERSATILITY.



The rear 3-point hitch is mechanically operated with simple, familiar controls.



Two rear remote valves are standard equipment, with up to 3 possible.



540 RPM rear PTO with mechanical engagement for precise control.

General farm jobs, loader work, transport operations, field work and much more – the tasks of a utility tractor are extremely diverse. When it comes to the attachment points of the new 4E Series, nothing is impossible. As always with DEUTZ-FAHR, the mechanical rear power lift is extremely accurate with simple, precision control. It can lift up to 5,500 lb (3,500 kg) allowing it to handle the heaviest of implements. The category II 3-point linkage comes equipped with ball ends on the upper and lower link arms and mechanical stabilizers. For hydraulic imple-

ments, there are two open center systems available: 11.1 gpm or 13.2 gpm of hydraulic flow - the steering system is operated by a separate, dedicated pump. Each model comes with 2 rear remote valves, and up to 3 rear remote valves are possible. The new 4E Series also offers a 540 RPM rear PTO to power implements such as balers and mowers. The PTO is activated mechanically, ensuring a smooth start. With these attachment point features, DEUTZ-FAHR is proving once again just how versatile a compact utility model can be.



THE DRIVER'S PLATFORM.
COMPACT DESIGN MEETS
GREAT COMFORT.



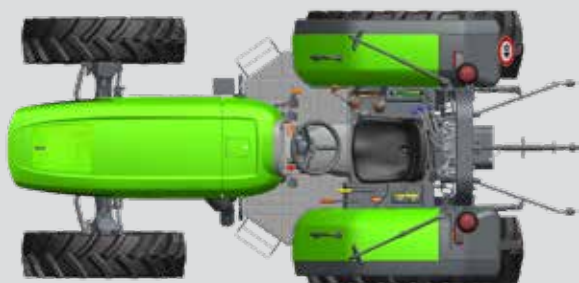
The new information display in the front dash keeps the operator informed about the machine's status and operation.



Transmission controls, foot and handle throttles, rear 3-point hitch and hydraulic controls are all within easy reach to the right side of the seat.

DEUTZ-FAHR always puts the focus on the driver, prioritizing comfort and safety. The steering wheel and suspended seat are individually adjustable. There is plenty of space on the platform to allow the driver to move freely and get comfortable. Steps and handholds on both sides of the tractor make it easy to climb on and through. The controls have been arranged logically according to how often they are used and clearly identified with color coding. The parking brake, PTO controls and 4wd engagement are located on the left side of the driver. On the right are the transmission and differential lock controls, hand and foot throttles, rear 3-point hitch controls and the hydraulic remote valve

levers. The new central information display in the dash provides the driver with clear information about the tractor's operating conditions, in digital and analogue form. The new 4E Series naturally offers an unobstructed view in all directions. This not only makes the work more efficient, but also improves safety. The floor mat, made from insulating material, minimizes the amount of noise, vibration and heat transferred to the driver for a more comfortable work place. With the new 4E Series, DEUTZ-FAHR is proving once again just how comfortable a utility tractor can be.



Technical data		4E SERIES	
		4070E	4080E
ENGINE			
Emission		Stage 4 / Tier 4	
Manufacturer		FARMotion	
Cylinders / displacement	No. / liters	3 / 2.9	
Bore x stroke	in / mm	4.1 x 4.5 / 103 x 115	
Aspiration		Turbocharged with intercooling	
High-pressure injection		Common rail @ 29,000 PSI (2,000 bar)	
Gross power at 2,000 rpm	HP / kW	70 / 52	80 / 59.6
Rated power at 2,200 rpm	HP / kW	65 / 48	75 / 55.4
Max. torque @ 1,600 rpm	lb-ft / Nm	215 / 292	252 / 342
Torque rise	%	41%	43%
Fuel tank capacity	gal / liters	19.8 / 75	
SHUTTLE TRANSMISSION			
Synchro-shuttle transmission with in-line shuttle lever		●	●
MECHANICAL MANUAL TRANSMISSION			
Speeds (Forward x Reverse)		8 x 8	15 x 15
Gears and ranges		4 gears x 2 ranges	5 gears x 3 ranges
Max. transport speed	mph / kph	18 / 30	25 / 40
Creeper gear		-	●
REAR PTO			
Mechanical activation		●	●
PTO speed 540 rpm		●	●
PTO stafey shutoff		●	●
FRONT AND REAR AXLE			
Mechanical 4wd engagement		●	-
Mechanical differential lock engagement		●	-
Electro-hydraulic 4wd engagement		-	●
Electro-hydraulic differential lock engagement		-	●
BRAKES AND STEERING			
Mechanical parking brake		●	●
Hydrostatic steering with dedicated pump		●	●
Max. steering angle		55°	
Integrated front axle brakes		●	●
POWER LIFT			
Mechanical 3-point hitch control		●	●
Lifting capacity	lb / kg	5,500 / 2,500	
Position and draft control		●	●
HYDRAULICS SYSTEM			
Hydraulic system type		Open center	
Hydraulic flow to implements	gpm / lpm	11.1 / 42	13.2 / 50
Rear remote valves		2 std / 3 opt	
PLATFORM			
Digital dash display		●	●
Platform with rubber cover		●	●
Folding ROPS		●	●
Right and left side entry		●	●
Suspended seat		●	●
DIMENSIONS AND WEIGHTS			
With rear tires		380/85 R28	420/70 R30
Wheelbase	in / mm	82.6 / 2,100	82.6 / 2,100
Max. length	in / mm	152 / 3,860	152 / 3,860
Max. height at roll bar	in / mm	96.3 / 2,448	97.3 / 2,473
Standard width	in / mm	70.2 / 1,782	72.5 / 1,840
Base shipping weigh	lb / kg	6,600 / 3,000	6,600 / 3,000
Max. permissible weight	lb / kg	10,550 / 4,800	10,550 / 4,800

Technical data is based on manufacturer's estimates. In order to deliver a product that is more and more in line with your needs, DEUTZ-FAHR reserves the right to update the specifications of its machines at any time without notice.

●: standard O: optional -: not available

Dealer

Distributor:
PFG America, LLC
535 Hurricane Shoals Court
Suite 100
Dacula, GA 30019
www.deutz-fahramerica.com



Deutz-Fahr and its logos are trademarks of Same Deutz-Fahr Italia S.P.A. in the U.S. and other countries used under license by PFG America, LLC. PFG America and logo are trademarks licensed to PFG America, LLC, which is the exclusive distributor of the Deutz-Fahr brand in the USA. Other logos are the trademarks of their respective owners. The standard and optional equipment and the availability of individual models might vary from one country to the next. PFG America reserves the right to undertake modifications without prior notice to the design and technical equipment at all times without any obligation whatsoever to make such modifications to units already sold. This brochure is for descriptive purposes only and while reasonable efforts were made to ensure that the specifications, descriptions, and illustrations in this brochure are correct at the time of printing, these are also subject to change without prior notice. Illustrations might show optional equipment, and might not show all standard equipment. PFG America disclaims all representations and warranties, express or implied, or any liability from the use or reliance upon this brochure. Power and other specifications are based on various standards or recommended practices not addressed herein. ©2018 PFG America, LLC. All Rights Reserved.